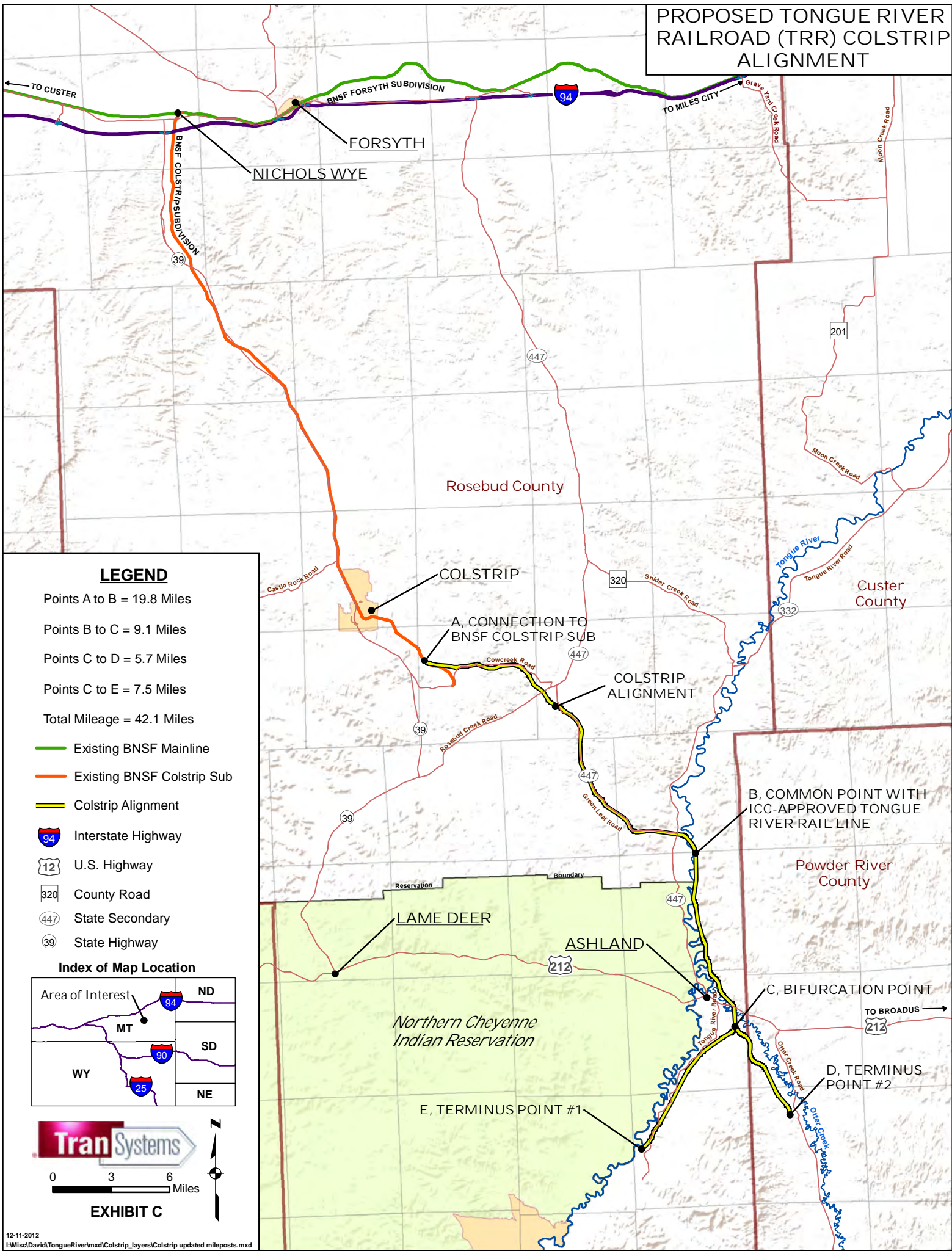


# PROPOSED TONGUE RIVER RAILROAD (TRR) COLSTRIP ALIGNMENT



## LEGEND

- Points A to B = 19.8 Miles
- Points B to C = 9.1 Miles
- Points C to D = 5.7 Miles
- Points C to E = 7.5 Miles
- Total Mileage = 42.1 Miles

- Existing BNSF Mainline
- Existing BNSF Colstrip Sub
- Colstrip Alignment
- Interstate Highway
- U.S. Highway
- County Road
- State Secondary
- State Highway

### Index of Map Location

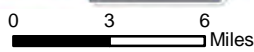
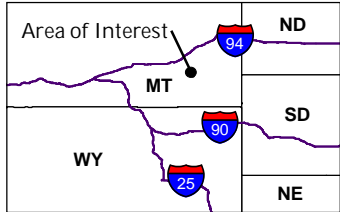


EXHIBIT C